



Notice to Employees--Injuries Caused By Work

You may be entitled to workers' compensation benefits if you are injured or become ill because of your job. Workers' compensation covers most work-related physical or mental injuries and illnesses. An injury or illness can be caused by one event (such as hurting your back in a fall) or by repeated exposures (such as hurting your wrist from doing the same motion over and over).

Benefits. Workers' compensation benefits include:

- **Medical Care:** Doctor visits, hospital services, physical therapy, lab tests, x-rays, medicines, medical equipment and travel costs that are reasonably necessary to treat your injury. You should never see a bill. There are limits on chiropractic, physical therapy and occupational therapy visits.
- **Temporary Disability (TD) Benefits:** Payments if you lose wages while recovering. For most injuries, TD benefits may not be paid for more than 104 weeks within five years from the date of injury.
- **Permanent Disability (PD) Benefits:** Payments if you do not recover completely and your injury causes a permanent loss of physical or mental function that a doctor can measure.
- **Supplemental Job Displacement Benefit:** A nontransferable voucher, if you are injured on or after 1/1/2004, your injury causes permanent disability, and your employer does not offer you regular, modified, or alternative work.
- **Death Benefits:** Paid to your dependents if you die from a work-related injury or illness.

Naming Your Own Physician Before Injury or Illness (Predesignation). You may be able to choose the doctor who will treat you for a job injury or illness. If eligible, you must tell your employer, in writing, the name and address of your personal physician or medical group *before* you are injured. You must obtain their agreement to treat you for your work injury. For instructions, see the written information about workers' compensation that your employer is required to give to new employees.

If You Get Hurt:

1. **Get Medical Care.** If you need emergency care, call 911 for help immediately from the hospital, ambulance, fire department or police department. If you need first aid, contact your employer.
2. **Report Your Injury.** Report the injury immediately to your supervisor or to an employer representative. Don't delay. There are time limits. If you wait too long, you may lose your right to benefits. Your employer is required to provide you with a claim form within one working day after learning about your injury. Within one working day after you file a claim form, your employer or claims administrator must authorize the provision of all treatment, up to ten thousand dollars, consistent with the applicable treatment guidelines, for your alleged injury until the claim is accepted or rejected.
3. **See Your Primary Treating Physician (PTP).** This is the doctor with overall responsibility for treating your injury or illness.
 - If you predesignated your personal physician or a medical group, you may see your personal physician or the medical group after you are injured.
 - If your employer is using a medical provider network (MPN) or a health care organization (HCO), in most cases you will be treated within the MPN or HCO unless you predesignated a personal physician or medical group. An MPN is a group of physicians and health care providers who provide treatment to workers injured on the job. You should receive information from your employer if you are covered by an HCO or a MPN. Contact your employer for more information.
 - If your employer is not using an MPN or HCO, in most cases the claims administrator can choose the doctor who first treats you when you are injured, unless you predesignated a personal physician or medical group.
4. **Medical Provider Networks.** Your employer may be using an MPN, which is a group of health care providers designated to provide treatment to workers injured on the job. If you have predesignated a personal physician or medical group prior to your work injury, then you may go there to receive treatment from your predesignated doctor. If you are treating with a non-MPN doctor for an existing injury, you may be required to change to a doctor within the MPN. For more information, see the MPN contact information below:

MPN website: _____

MPN Effective Date: _____ MPN Identification number: _____

If you need help locating an MPN physician, call your MPN access assistant at: _____

If you have questions about the MPN or want to file a complaint against the MPN, call the MPN Contact Person at: _____

Discrimination. It is illegal for your employer to punish or fire you for having a work injury or illness, for filing a claim, or testifying in another person's workers' compensation case. If proven, you may receive lost wages, job reinstatement, increased benefits, and costs and expenses up to limits set by the state.

Questions? Learn more about workers' compensation by reading the information that your employer is required to give you at time of hire. If you have questions, see your employer or the claims administrator (who handles workers' compensation claims for your employer):

Claims Administrator _____ Phone _____

Workers' compensation insurer _____ (Enter "self-insured" if appropriate)

You can also get free information from a State Division of Workers' Compensation Information (DWC) & Assistance Officer. The nearest Information & Assistance Officer can be found at location: _____ or by calling toll-free **(800) 736-7401**. Learn more information about workers' compensation online: www.dwc.ca.gov and access a useful booklet "Workers' Compensation in California: A Guidebook for Injured Workers."

False claims and false denials. Any person who makes or causes to be made any knowingly false or fraudulent material statement or material representation for the purpose of obtaining or denying workers' compensation benefits or payments is guilty of a felony and may be fined and imprisoned.

Your employer may not be liable for the payment of workers' compensation benefits for any injury that arises from your voluntary participation in any **off-duty, recreational, social, or athletic activity** that is not part of your work-related duties.



Aviso a los Empleados—Lesiones Causadas por el Trabajo

Es posible que usted tenga derecho a beneficios de compensación de trabajadores si usted se lesiona o se enferma a causa de su trabajo. La compensación de trabajadores cubre la mayoría de las lesiones y enfermedades físicas o mentales relacionadas con el trabajo. Una lesión o enfermedad puede ser causada por un evento (como por ejemplo lastimarse la espalda en una caída) o por acciones repetidas (como por ejemplo lastimarse la muñeca por hacer el mismo movimiento una y otra vez).

Beneficios. Los beneficios de compensación de trabajadores incluyen:

- **Atención Médica:** Consultas médicas, servicios de hospital, terapia física, análisis de laboratorio, radiografías, medicinas, equipo médico y costos de viajar que son razonablemente necesarias para tratar su lesión. Usted nunca deberá ver un cobro. Hay límites para visitas quiroprácticas, de terapia física y de terapia ocupacional.
- **Beneficios por Incapacidad Temporal (TD):** Pagos si usted pierde sueldo mientras se recupera. Para la mayoría de las lesiones, beneficios de TD no se pagarán por más de 104 semanas dentro de cinco años después de la fecha de la lesión.
- **Beneficios por Incapacidad Permanente (PD):** Pagos si usted no se recupera completamente y si su lesión le causa una pérdida permanente de su función física o mental que un médico puede medir.
- **Beneficio Suplementario por Desplazamiento de Trabajo:** Un vale no-transferible si su lesión surge en o después del 1/1/04, y su lesión le ocasiona una incapacidad permanente, y su empleador no le ofrece a usted un trabajo regular, modificado, o alternativo.
- **Beneficios por Muerte:** Pagados a sus dependientes si usted muere a causa de una lesión o enfermedad relacionada con el trabajo.

Designación de su Propio Médico Antes de una Lesión o Enfermedad (Designación previa). Es posible que usted pueda elegir al médico que le atenderá en una lesión o enfermedad relacionada con el trabajo. Si elegible, usted debe informarle al empleador, por escrito, el nombre y la dirección de su médico personal o grupo médico, *antes* de que usted se lesione. Usted debe de ponerse de acuerdo con su médico para que atienda la lesión causada por el trabajo. Para instrucciones, vea la información escrita sobre la compensación de trabajadores que se le exige a su empleador darle a los empleados nuevos.

Si Usted se Lastima:

1. **Obtenga Atención Médica.** Si usted necesita atención de emergencia, llame al 911 para ayuda inmediata de un hospital, una ambulancia, el departamento de bomberos o departamento de policía. Si usted necesita primeros auxilios, comuníquese con su empleador.
2. **Reporte su Lesión.** Reporte la lesión inmediatamente a su supervisor(a) o a un representante del empleador. No se demore. Hay límites de tiempo. Si usted espera demasiado, es posible que usted pierda su derecho a beneficios. Su empleador está obligado a proporcionarle un formulario de reclamo dentro de un día laboral después de saber de su lesión. Dentro de un día después de que usted presente un formulario de reclamo, el empleador o administrador de reclamos debe autorizar todo tratamiento médico, hasta diez mil dólares, de acuerdo con las pautas de tratamiento aplicables a su presunta lesión, hasta que el reclamo sea aceptado o rechazado.
3. **Consulte al Médico que le está Atendiendo (PTP).** Este es el médico con la responsabilidad total de tratar su lesión o enfermedad.
 - Si usted designó previamente a su médico personal o grupo médico, usted puede consultar a su médico personal o grupo médico después de lesionarse.
 - Si su empleador está utilizando una Red de Proveedores Médicos (MPN) o una Organización de Cuidado Médico (HCO), en la mayoría de los casos usted será tratado dentro de la MPN o la HCO a menos que usted designó previamente un médico personal o grupo médico. Una MPN es un grupo de médicos y proveedores de atención médica que proporcionan tratamiento a trabajadores lesionados en el trabajo. Usted debe recibir información de su empleador si está cubierto por una HCO o una MPN. Hable con su empleador para más información.
 - Si su empleador no está utilizando una MPN o HCO, en la mayoría de los casos el administrador de reclamos puede escoger el médico que lo atiende primero, cuando usted se lesiona, a menos que usted designó previamente a un médico personal o grupo médico.
4. **Red de Proveedores Médicos (MPN):** Es posible que su empleador use una MPN, lo cual es un grupo de proveedores de asistencia médica designados para dar tratamiento a los trabajadores lesionados en el trabajo. **Si usted ha hecho una designación previa de un médico personal antes de lesionarse en el trabajo, entonces usted puede recibir tratamiento de su médico previamente designado.** Si usted está recibiendo tratamiento de parte de un médico que no pertenece a la MPN para una lesión existente, puede requerirse que usted se cambie a un médico dentro de la MPN. Para más información, vea la siguiente información de contacto de la MPN :

Página web de la MPN: _____

Fecha de vigencia de la MPN: _____ Número de identificación de la MPN: _____

Si usted necesita ayuda en localizar un médico de una MPN, llame a su asistente de acceso de la MPN al: _____

Si usted tiene preguntas sobre la MPN o quiere presentar una queja en contra de la MPN, llame a la Persona de Contacto de la MPN al: _____

Discriminación. Es ilegal que su empleador le castigue o despidan por sufrir una lesión o enfermedad en el trabajo, por presentar un reclamo o por testificar en el caso de compensación de trabajadores de otra persona. De ser probado, usted puede recibir pagos por pérdida de sueldos, reposición del trabajo, aumento de beneficios y gastos hasta los límites establecidos por el estado.

¿Preguntas? Aprenda más sobre la compensación de trabajadores leyendo la información que se requiere que su empleador le dé cuando es contratado. Si usted tiene preguntas, vea a su empleador o al administrador de reclamos (que se encarga de los reclamos de compensación de trabajadores de su empleador):

Administrador de Reclamos _____ Teléfono _____

Asegurador del Seguro de Compensación de trabajador _____ (Anote “autoasegurado” si es apropiado)

Usted también puede obtener información gratuita de un Oficial de Información y Asistencia de la División Estatal de Compensación de Trabajadores. El Oficial de Información y Asistencia más cercano se localiza en: _____ o llamando al número gratuito (800) 736-7401. Usted puede obtener más información sobre la compensación del trabajador en el Internet en: www.dwc.ca.gov y acceder a una guía útil “Compensación del Trabajador de California Una Guía para Trabajadores Lesionados.”

Los reclamos falsos y rechazos falsos del reclamo. Cualquier persona que haga o que ocasione que se haga una declaración o una representación material intencionalmente falsa o fraudulenta, con el fin de obtener o negar beneficios o pagos de compensación de trabajadores, es culpable de un delito grave y puede ser multado y encarcelado.

Es posible que su empleador no sea responsable por el pago de beneficios de compensación de trabajadores para ninguna lesión que proviene de su participación voluntaria en cualquier **actividad fuera del trabajo, recreativa, social, o atlética** que no sea parte de sus deberes laborales.

ACCESS TO MEDICAL AND EXPOSURE RECORDS



BY CAL/OSHA REGULATION - GENERAL INDUSTRY SAFETY ORDER [3204](#) - YOU HAVE THE RIGHT TO SEE AND COPY:

- Your medical records and records of exposure to toxic substances or harmful physical agents.
- Records of exposure to toxic substances or harmful physical agents of other employees with work conditions similar to yours.
- Safety Data Sheets (SDS) or other information that exists for chemicals or substances used in the workplace, or which employees may be exposed.

THESE RECORDS ARE AVAILABLE AT: Medical - 714-565-3780
Exposure - 714-285-5500 (Location)

FROM: Medical - HCA Employee Health, Exposure - CEO Risk Management
(Person Responsible)

A COPY OF THE GENERAL INDUSTRY SAFETY ORDER [3204](#)
IS AVAILABLE FROM: <https://www.dir.ca.gov/Title8/3204.html>

The above information satisfies the requirements of GISO [3204](#) (g), which may be fulfilled by posting this placard in the workplace, or by any similar method the employer chooses.



January 2015

State of California
Department of Industrial Relations
Division of Occupational Safety and Health
1515 Clay Street, Suite 1901
Oakland, CA 94612
Phone: (510) 286-7000
Fax: (510) 286-7037

FAMILY CARE & MEDICAL LEAVE & PREGNANCY DISABILITY LEAVE

DFEH



THE DEPARTMENT OF FAIR EMPLOYMENT AND HOUSING

THE MISSION OF THE DEPARTMENT OF FAIR EMPLOYMENT AND HOUSING IS TO PROTECT THE PEOPLE OF CALIFORNIA FROM UNLAWFUL DISCRIMINATION IN EMPLOYMENT, HOUSING, BUSINESS ESTABLISHMENTS, AND STATE-FUNDED PROGRAMS AND ACTIVITIES, AND FROM HATE VIOLENCE AND HUMAN TRAFFICKING.

Under California law, you may have the right to take job-protected leave to care for your own serious health condition or a family member with a serious health condition, or to bond with a new child (via birth, adoption, or foster care). California law also requires employers to provide job-protected leave and accommodations to employees who are disabled by pregnancy, childbirth, or a related medical condition.

Under the California Family Rights Act of 1993 (CFRA), if you have more than 12 months of service with us and have worked at least 1,250 hours in the 12-month period before the date you want to begin your leave, and if we employ five or more employees, you may have a right to a family care or medical leave (CFRA leave). This leave may be up to 12 workweeks in a 12-month period for the birth, adoption, or foster care placement of your child or for your own serious health condition or that of your child, parent, parent-in-law, grandparent, sibling, spouse, or domestic partner. While the law provides only unpaid leave, employees may choose or employers may require use of accrued paid leave while taking CFRA leave under certain circumstances.

Even if you are not eligible for CFRA leave, if you are disabled by pregnancy, childbirth or a related medical condition, you are entitled to take a pregnancy disability leave of up to four months, depending on your period(s) of actual disability. If you are CFRA-eligible, you have certain rights to take BOTH a pregnancy disability leave and a CFRA leave for reason of the birth of your child. Both leaves contain a guarantee of reinstatement-for pregnancy disability it is to the same position and for CFRA it is to the same or a comparable position-at the end of the leave, subject to any defense allowed under the law.

If possible, you must provide at least 30 days' advance notice for foreseeable events (such as the expected birth of a child or a planned medical treatment for yourself or of a family member). For events that are unforeseeable, we need you to notify us, at least verbally, as soon as you learn of the need for the leave. Failure to comply with these notice rules is grounds for, and may result in, deferral of the requested leave until you comply with this notice policy.

We may require certification from your health care provider before allowing you a leave for pregnancy disability or for your own serious health condition. We also may require certification from the health care provider of your family member who has a serious health condition, before allowing you a leave to take care of that family member. When medically necessary, leave may be taken on an intermittent or reduced work schedule.

If you are taking a leave for the birth, adoption, or foster care placement of a child, the basic minimum duration of the leave is two weeks, and you must conclude the leave within one year of the birth or placement for adoption or foster care.

Taking a family care or pregnancy disability leave may impact certain of your benefits and your seniority date. If you want more information regarding your eligibility for a leave and/or the impact of the leave on your seniority and benefits, please contact your employer.

If you have been subjected to discrimination, harassment, or retaliation at work, or have been improperly denied PDL or CFRA leave, file a complaint with DFEH.

TO FILE A COMPLAINT

Department of Fair Employment and Housing

dfeh.ca.gov

Toll Free: 800.884.1684

TTY: 800.700.2320

If you have a disability that requires a reasonable accommodation, DFEH can assist you with your complaint. Contact us through any method above or, for individuals who are deaf or hard of hearing or have speech disabilities, through the California Relay Service (711).

Notice to Employees



UI

This employer is registered with the Employment Development Department (EDD) as required by the California Unemployment Insurance Code and is reporting wage credits to the EDD that are being accumulated for you to be used as a basis for:

Unemployment Insurance

(funded entirely by employers’ taxes)

Unemployment Insurance (UI) is paid for by your employer and provides partial income replacement when you are unemployed or your hours are reduced due to no fault of your own. To claim UI benefit payments you must also meet all UI eligibility requirements, including that you must be available for work and searching for work.

How to File a New UI Claim

Use one of the following methods:

- **Online:** UI OnlineSM is the fastest and most convenient way to file your UI claim. Visit [UI Online](http://edd.ca.gov/UI_Online) (edd.ca.gov/UI_Online) to get started.
- **Phone:** Representatives are available at the following toll-free numbers, Monday through Friday between **8 a.m. to 12 noon** (Pacific Standard Time) except during state holidays.

English	1-800-300-5616	Cantonese	1-800-547-3506	Vietnamese	1-800-547-2058
Spanish	1-800-326-8937	Mandarin	1-866-303-0706	TTY	1-800-815-9387
- **Fax or Mail:** When accessing UI Online to file a new claim, some customers will be instructed to fax or mail their UI application to the EDD. If this occurs, the *Unemployment Insurance Application* (DE 1101I), will display. For faster and more secure processing, fax the completed form to the number listed on the form. If mailing your UI application, use the address on the form and allow additional time for processing.

Important: Waiting to file your UI claim may delay benefit payments.

DI

Disability Insurance

(funded entirely by employees’ contributions)

Disability Insurance (DI) is funded by employees’ contributions and provides partial wage replacement benefits to eligible Californians who are unable to work due to a non-work-related illness, injury, pregnancy, or disability.

Your employer must provide the *Disability Insurance Provisions* (DE 2515) brochure, to newly hired employees and to each employee who is unable to work due to a non-work-related illness, injury, pregnancy, or disability.

How to File a New DI Claim

Use one of the following methods:

- **Online:** SDI Online is the fastest and most convenient way to file your claim. Visit [SDI Online](http://edd.ca.gov/SDI_Online) (edd.ca.gov/SDI_Online) to get started.
- **Mail:** To file a claim with the EDD by mail, complete and submit a *Claim for Disability Insurance (DI) Benefits* (DE 2501) form. You can obtain a paper claim form from your employer, physician/practitioner, visiting a State Disability Insurance office, online at [EDD Forms and Publications](http://edd.ca.gov/Forms) (edd.ca.gov/Forms), or by calling 1-800-480-3287.

Note: If your employer maintains an approved Voluntary Plan for DI coverage, contact your employer for assistance.

For more information about DI, visit [State Disability Insurance](http://edd.ca.gov/disability) (edd.ca.gov/disability) or call 1-800-480-3287.
State government employees should call 1-866-352-7675.

TTY (for deaf or hearing-impaired individuals only) is available at 1-800-563-2441.

PFL

Paid Family Leave

(funded entirely by employees’ contributions)

Paid Family Leave (PFL) is funded by employees’ contributions and provides partial wage replacement benefits to eligible Californians who need time off work to care for seriously ill child, parent, parent-in-law, grandparent, grandchild, sibling, spouse, or registered domestic partner. Benefits are available to parents who need time off work to bond with a new child entering the family by birth, adoption, or foster care placement. Benefits are also available for eligible Californians who need time off work to participate in a qualifying event resulting from a spouse, registered domestic partner, parent, or child’s military deployment to a foreign country.

Your employer must provide the *Paid Family Leave* (DE 2511) brochure, to newly hired employees and to each employee who is taking time off work to care for a seriously ill family members, to bond with a new child, or to participate in a qualifying military event.

How to File a New PFL Claim

Use one of the following methods:

- **Online:** SDI Online is the fastest and most convenient way to file your claim. Visit [SDI Online](http://edd.ca.gov/SDI_Online) (edd.ca.gov/SDI_Online) to get started.
- **Mail:** To file a claim with the EDD by mail, complete and submit a *Claim for Paid Family Leave (PFL) Benefits* (DE 2501F) form. You can obtain a paper claim form from your employer, a physician/practitioner, visiting a State Disability Insurance office, online at [EDD Forms and Publications](http://edd.ca.gov/Forms) (edd.ca.gov/Forms), or by calling 1-877-238-4373.

Note: If your employer maintains an approved Voluntary Plan for PFL coverage, contact your employer for assistance.

For more information about PFL, visit [State Disability Insurance](http://edd.ca.gov/disability) (edd.ca.gov/disability) or call 1-877-238-4373.

State government employees should call 1-877-945-4747.

TTY (for deaf or hearing-impaired individuals only) is available at 1-800-445-1312.

Note: Some employees may be exempt from coverage by the above insurance programs. It is illegal to make a false statement or to withhold facts to claim benefits. For additional information, visit the [EDD](http://edd.ca.gov) (edd.ca.gov).

TRANSGENDER RIGHTS IN THE WORKPLACE

DFEH



WHAT DOES “TRANSGENDER” MEAN?

Transgender is a term used to describe people whose gender identity differs from the sex they were assigned at birth. Gender expression is defined by the law to mean a “person’s gender-related appearance and behavior whether or not stereotypically associated with the person’s assigned sex at birth.” Gender identity and gender expression are protected characteristics under the Fair Employment and Housing Act. That means that employers may not discriminate against someone because they identify as transgender or gender non-conforming. This includes the perception that someone is transgender or gender non-conforming.

WHAT IS A GENDER TRANSITION?

1. “Social transition” involves a process of socially aligning one’s gender with the internal sense of self (e.g., changes in name and pronoun, bathroom facility usage, participation in activities like sports teams).

2. “Physical transition” refers to medical treatments an individual may undergo to physically align their body with internal sense of self (e.g., hormone therapies or surgical procedures).

A person does not need to complete any particular step in a gender transition in order to be protected by the law. An employer may not condition its treatment or accommodation of a transitioning employee upon completion of a particular step in a gender transition.

FAQ FOR EMPLOYERS

• What is an employer allowed to ask?

Employers may ask about an employee’s employment history, and may ask for personal references, in addition to other non-discriminatory questions. An interviewer should not ask questions designed to detect a person’s gender identity, including asking about their marital status, spouse’s name, or relation of household members to one another. Employers should not ask questions about a person’s body or whether they plan to have surgery.

• How do employers implement dress codes and grooming standards?

An employer who requires a dress code must enforce it in a non-discriminatory manner. This means that, unless an employer can demonstrate business necessity, each employee must be allowed to dress in accordance with their gender identity and gender expression. Transgender or gender non-conforming employees may not be held to any different standard of dress or grooming than any other employee.

• What are the obligations of employers when it comes to bathrooms, showers, and locker rooms?

All employees have a right to safe and appropriate restroom and locker room facilities. This includes the right to use a restroom or locker room that corresponds to the employee’s gender identity, regardless of the employee’s assigned sex at birth. In addition, where possible, an employer should provide an easily accessible unisex single stall bathroom for use by any employee who desires increased privacy, regardless of the underlying reason. Use of a unisex single stall restroom should always be a matter of choice. No employee should be forced to use one either as a matter of policy or due to harassment in a gender-appropriate facility. Unless exempted by other provisions of state law, all single-user toilet facilities in any business establishment, place of public accommodation, or state or local government agency must be identified as all-gender toilet facilities.

FILING A COMPLAINT

If you believe you are a victim of discrimination you may, within three years* of the discrimination, file a complaint of discrimination by contacting DFEH.

To schedule an appointment, contact the Communication Center below.

If you have a disability that requires a reasonable accommodation, the DFEH can assist you by scribing your intake by phone or, for individuals who are Deaf or Hard of Hearing or have speech disabilities, through the California Relay Service (711), or you can contact us below.

CONTACT US

Toll Free: (800) 884-1684
TTY: (800) 700-2320
contact.center@dfeh.ca.gov
www.dfeh.ca.gov

DFEH

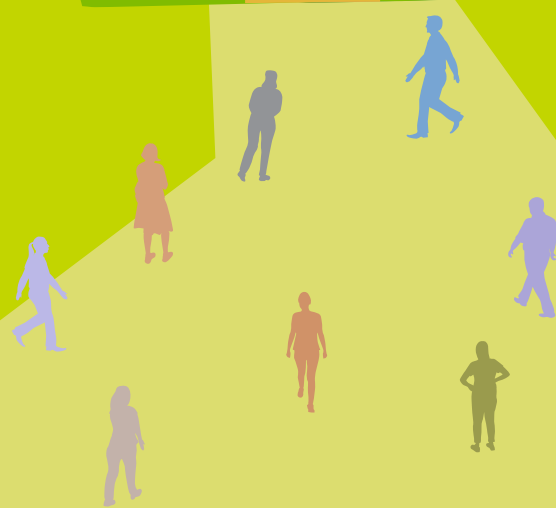


THE DEPARTMENT OF FAIR EMPLOYMENT AND HOUSING
THE MISSION OF THE DEPARTMENT OF FAIR EMPLOYMENT
AND HOUSING IS TO PROTECT THE PEOPLE OF CALIFORNIA
FROM UNLAWFUL DISCRIMINATION IN EMPLOYMENT,
HOUSING AND PUBLIC ACCOMMODATIONS, AND FROM
THE PERPETRATION OF ACTS OF HATE VIOLENCE AND
HUMAN TRAFFICKING.

CALIFORNIA LAW PROHIBITS WORKPLACE DISCRIMINATION & HARASSMENT

The California Department of Fair Employment and Housing (DFEH) enforces laws that protect you from illegal discrimination and harassment in employment based on your actual or perceived:

- ANCESTRY
- AGE (40 and above)
- COLOR
- DISABILITY (physical, mental, HIV and AIDS)
- GENETIC INFORMATION
- GENDER IDENTITY, GENDER EXPRESSION
- MARITAL STATUS
- MEDICAL CONDITION (genetic characteristics, cancer or a record or history of cancer)
- MILITARY OR VETERAN STATUS
- NATIONAL ORIGIN (includes language use and possession of a driver's license issued to persons unable to prove their presence in the United States is authorized under federal law)
- RACE (including, but not limited to, hair texture and protective hairstyles. Protective hairstyles includes, but is not limited to, such hairstyles as braids, locks, and twists)
- RELIGION (includes religious dress and grooming practices,)
- SEX/GENDER (includes pregnancy, childbirth, breastfeeding and/or related medical conditions)
- SEXUAL ORIENTATION





THE CALIFORNIA FAIR EMPLOYMENT AND HOUSING ACT (GOVERNMENT CODE SECTIONS 12900 THROUGH 12996) AND ITS IMPLEMENTING REGULATIONS (CALIFORNIA CODE OF REGULATIONS, TITLE 2, SECTIONS 11000 THROUGH 11141):

- 1.** Prohibit harassment of employees, applicants, unpaid interns, volunteers, and independent contractors by any persons and require employers to take all reasonable steps to prevent harassment. This includes a prohibition against sexual harassment, gender harassment, harassment based on pregnancy, childbirth, breastfeeding and/or related medical conditions, as well as harassment based on all other characteristics listed above.
- 2.** Require that all employers provide information to each of their employees on the nature, illegality, and legal remedies that apply to sexual harassment. Employers may either develop their own publications, which must meet standards set forth in California Government Code section 12950, or use material from DFEH.
- 3.** Require employers with 5 or more employees and all public entities to provide training for all employees regarding the prevention of sexual harassment, including harassment based on gender identity, gender expression, and sexual orientation.
- 4.** Prohibit employers from limiting or prohibiting the use of any language in any workplace unless justified by business necessity. The employer must notify employees of the language restriction and consequences for violation. Also prohibit employers from discriminating against an applicant or employee because they possess a driver's license issued to a person who is unable to prove that their presence in the United States is authorized under federal law.
- 5.** Require employers to reasonably accommodate an employee, unpaid intern, or job applicant's religious beliefs and practices, including the wearing or carrying of religious clothing, jewelry or artifacts, and hair styles, facial hair, or body hair, which are part of an individual's observance of their religious beliefs.
- 6.** Require employers to reasonably accommodate employees or job applicants with disabilities to enable them to perform the essential functions of a job.
- 7.** Permit job applicants, unpaid interns, volunteers, and employees to file complaints with DFEH against an employer, employment agency, or labor union that fails to grant equal employment as required by law.
- 8.** Prohibit discrimination on a protected basis against any job applicant, unpaid intern, or employee in hiring, promotions, assignments, termination, or any term, condition, or privilege of employment.
- 9.** Require employers, employment agencies, and unions to preserve applications, personnel records, and employment referral records for a minimum of four years.
- 10.** Require employers to provide leaves of up to four months to employees disabled because of pregnancy, childbirth, or a related medical condition.
- 11.** Require an employer to provide reasonable accommodations requested by an employee, on the advice of their health care provider, related to their pregnancy, childbirth, or a related medical condition.

- 12.** Require employers of 5 or more persons to allow eligible employees to take up to 12 weeks leave in a 12-month period: to care for their own serious health condition; to care for a child of any age*, spouse, domestic partner, parent**, grandparent, grandchild, or sibling with a serious health condition; to bond with a new child (by birth, adoption, or foster placement); or for certain military exigencies.
- 13.** Require employment agencies to serve all applicants equally, refuse discriminatory job orders, and prohibit employers and employment agencies from making discriminatory pre-hiring inquiries or publishing help-wanted advertisements that express a discriminatory hiring preference.
- 14.** Prohibit unions from discriminating in member admissions or dispatching members to jobs.
- 15.** Prohibit retaliation against a person who opposes, reports, or assists another person to oppose unlawful discrimination.

FILING A COMPLAINT

The law provides for remedies for individuals who experience prohibited discrimination, harassment, or retaliation in the workplace. These remedies include hiring, front pay, back pay, promotion, reinstatement, cease-and-desist orders, expert witness fees, reasonable attorney's fees and costs, punitive damages, and emotional distress damages.

Job applicants, unpaid interns, and employees: If you believe you have experienced discrimination, harassment, or retaliation you may file a complaint with DFEH. Independent contractors and volunteers: If you believe you have been harassed, you may file a complaint with DFEH.

Complaints must be filed within three years of the last act of discrimination/harassment/retaliation. For victims who are under the age of eighteen, not later than three years after the last act of discrimination/harassment/retaliation or one year after the victim's eighteenth birthday, whichever is later.

If you have been subjected to discrimination, harassment, or retaliation at work, or have been improperly denied family or medical leave, file a complaint with DFEH.

TO FILE A COMPLAINT

Department of Fair Employment and Housing
dfeh.ca.gov
Toll Free: 800.884.1684
TTY: 800.700.2320

If you have a disability that requires a reasonable accommodation, DFEH can assist you with your complaint. Contact us through any method above or, for individuals who are deaf or hard of hearing or have speech disabilities, through the California Relay Service (711).

DFEH is committed to providing access to our materials in an alternative format as a reasonable accommodation for people with disabilities when requested.

Government Code section 12950 and California Code of Regulations, title 2, section 11013, require all employers to post this document. It must be conspicuously posted in hiring offices, on employee bulletin boards, in employment agency waiting rooms, union halls, and other places employees gather. Any employer whose workforce at any facility or establishment consists of more than 10% of non-English speaking persons must also post this notice in the appropriate language or languages.

* "Child" means a biological, adopted, or foster child, a stepchild, a legal ward, or a child of an employee or the employee's domestic partner, or a person to whom the employee stands in loco parentis.
** "Parent" includes a biological, foster, or adoptive parent, a parent-in-law, a stepparent, a legal guardian, or other person who stood in loco parentis to the employee when the employee was a child.

EMPLOYEE RIGHTS

UNDER THE FAIR LABOR STANDARDS ACT

FEDERAL MINIMUM WAGE

\$7.25 PER HOUR

BEGINNING JULY 24, 2009

The law requires employers to display this poster where employees can readily see it.

OVERTIME PAY At least 1½ times the regular rate of pay for all hours worked over 40 in a workweek.

CHILD LABOR An employee must be at least 16 years old to work in most non-farm jobs and at least 18 to work in non-farm jobs declared hazardous by the Secretary of Labor. Youths 14 and 15 years old may work outside school hours in various non-manufacturing, non-mining, non-hazardous jobs with certain work hours restrictions. Different rules apply in agricultural employment.

TIP CREDIT Employers of “tipped employees” who meet certain conditions may claim a partial wage credit based on tips received by their employees. Employers must pay tipped employees a cash wage of at least \$2.13 per hour if they claim a tip credit against their minimum wage obligation. If an employee’s tips combined with the employer’s cash wage of at least \$2.13 per hour do not equal the minimum hourly wage, the employer must make up the difference.

NURSING MOTHERS The FLSA requires employers to provide reasonable break time for a nursing mother employee who is subject to the FLSA’s overtime requirements in order for the employee to express breast milk for her nursing child for one year after the child’s birth each time such employee has a need to express breast milk. Employers are also required to provide a place, other than a bathroom, that is shielded from view and free from intrusion from coworkers and the public, which may be used by the employee to express breast milk.

ENFORCEMENT The Department has authority to recover back wages and an equal amount in liquidated damages in instances of minimum wage, overtime, and other violations. The Department may litigate and/or recommend criminal prosecution. Employers may be assessed civil money penalties for each willful or repeated violation of the minimum wage or overtime pay provisions of the law. Civil money penalties may also be assessed for violations of the FLSA’s child labor provisions. Heightened civil money penalties may be assessed for each child labor violation that results in the death or serious injury of any minor employee, and such assessments may be doubled when the violations are determined to be willful or repeated. The law also prohibits retaliating against or discharging workers who file a complaint or participate in any proceeding under the FLSA.

ADDITIONAL INFORMATION

- Certain occupations and establishments are exempt from the minimum wage, and/or overtime pay provisions.
- Special provisions apply to workers in American Samoa, the Commonwealth of the Northern Mariana Islands, and the Commonwealth of Puerto Rico.
- Some state laws provide greater employee protections; employers must comply with both.
- Some employers incorrectly classify workers as “independent contractors” when they are actually employees under the FLSA. It is important to know the difference between the two because employees (unless exempt) are entitled to the FLSA’s minimum wage and overtime pay protections and correctly classified independent contractors are not.
- Certain full-time students, student learners, apprentices, and workers with disabilities may be paid less than the minimum wage under special certificates issued by the Department of Labor.



WAGE AND HOUR DIVISION
UNITED STATES DEPARTMENT OF LABOR

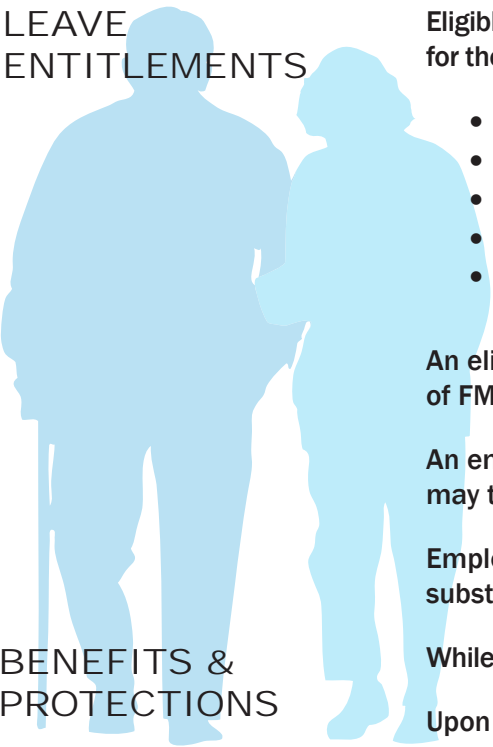
1-866-487-9243
TTY: 1-877-889-5627
www.dol.gov/whd



EMPLOYEE RIGHTS UNDER THE FAMILY AND MEDICAL LEAVE ACT

THE UNITED STATES DEPARTMENT OF LABOR WAGE AND HOUR DIVISION

LEAVE ENTITLEMENTS



Eligible employees who work for a covered employer can take up to 12 weeks of unpaid, job-protected leave in a 12-month period for the following reasons:

- The birth of a child or placement of a child for adoption or foster care;
- To bond with a child (leave must be taken within one year of the child’s birth or placement);
- To care for the employee’s spouse, child, or parent who has a qualifying serious health condition;
- For the employee’s own qualifying serious health condition that makes the employee unable to perform the employee’s job;
- For qualifying exigencies related to the foreign deployment of a military member who is the employee’s spouse, child, or parent.

An eligible employee who is a covered servicemember’s spouse, child, parent, or next of kin may also take up to 26 weeks of FMLA leave in a single 12-month period to care for the servicemember with a serious injury or illness.

An employee does not need to use leave in one block. When it is medically necessary or otherwise permitted, employees may take leave intermittently or on a reduced schedule.

Employees may choose, or an employer may require, use of accrued paid leave while taking FMLA leave. If an employee substitutes accrued paid leave for FMLA leave, the employee must comply with the employer’s normal paid leave policies.

While employees are on FMLA leave, employers must continue health insurance coverage as if the employees were not on leave.

Upon return from FMLA leave, most employees must be restored to the same job or one nearly identical to it with equivalent pay, benefits, and other employment terms and conditions.

An employer may not interfere with an individual’s FMLA rights or retaliate against someone for using or trying to use FMLA leave, opposing any practice made unlawful by the FMLA, or being involved in any proceeding under or related to the FMLA.

BENEFITS & PROTECTIONS

ELIGIBILITY REQUIREMENTS

An employee who works for a covered employer must meet three criteria in order to be eligible for FMLA leave. The employee must:

- Have worked for the employer for at least 12 months;
- Have at least 1,250 hours of service in the 12 months before taking leave;* and
- Work at a location where the employer has at least 50 employees within 75 miles of the employee’s worksite.

*Special “hours of service” requirements apply to airline flight crew employees.

REQUESTING LEAVE

Generally, employees must give 30-days’ advance notice of the need for FMLA leave. If it is not possible to give 30-days’ notice, an employee must notify the employer as soon as possible and, generally, follow the employer’s usual procedures.

Employees do not have to share a medical diagnosis, but must provide enough information to the employer so it can determine if the leave qualifies for FMLA protection. Sufficient information could include informing an employer that the employee is or will be unable to perform his or her job functions, that a family member cannot perform daily activities, or that hospitalization or continuing medical treatment is necessary. Employees must inform the employer if the need for leave is for a reason for which FMLA leave was previously taken or certified.

Employers can require a certification or periodic recertification supporting the need for leave. If the employer determines that the certification is incomplete, it must provide a written notice indicating what additional information is required.

Once an employer becomes aware that an employee’s need for leave is for a reason that may qualify under the FMLA, the employer must notify the employee if he or she is eligible for FMLA leave and, if eligible, must also provide a notice of rights and responsibilities under the FMLA. If the employee is not eligible, the employer must provide a reason for ineligibility.

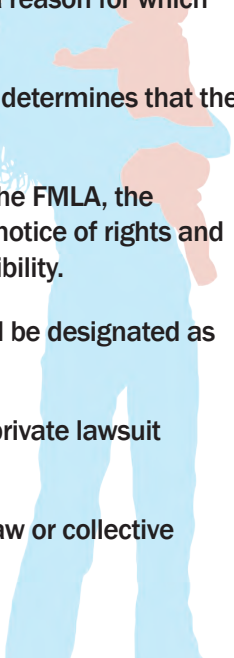
Employers must notify its employees if leave will be designated as FMLA leave, and if so, how much leave will be designated as FMLA leave.

EMPLOYER RESPONSIBILITIES

ENFORCEMENT

Employees may file a complaint with the U.S. Department of Labor, Wage and Hour Division, or may bring a private lawsuit against an employer.

The FMLA does not affect any federal or state law prohibiting discrimination or supersede any state or local law or collective bargaining agreement that provides greater family or medical leave rights.



For additional information or to file a complaint:

1-866-4-USWAGE

(1-866-487-9243) TTY: 1-877-889-5627

www.dol.gov/whd

U.S. Department of Labor | Wage and Hour Division



Equal Employment Opportunity is THE LAW

Private Employers, State and Local Governments, Educational Institutions, Employment Agencies and Labor Organizations

Applicants to and employees of most private employers, state and local governments, educational institutions, employment agencies and labor organizations are protected under Federal law from discrimination on the following bases:

RACE, COLOR, RELIGION, SEX, NATIONAL ORIGIN

Title VII of the Civil Rights Act of 1964, as amended, protects applicants and employees from discrimination in hiring, promotion, discharge, pay, fringe benefits, job training, classification, referral, and other aspects of employment, on the basis of race, color, religion, sex (including pregnancy), or national origin. Religious discrimination includes failing to reasonably accommodate an employee's religious practices where the accommodation does not impose undue hardship.

DISABILITY

Title I and Title V of the Americans with Disabilities Act of 1990, as amended, protect qualified individuals from discrimination on the basis of disability in hiring, promotion, discharge, pay, fringe benefits, job training, classification, referral, and other aspects of employment. Disability discrimination includes not making reasonable accommodation to the known physical or mental limitations of an otherwise qualified individual with a disability who is an applicant or employee, barring undue hardship.

AGE

The Age Discrimination in Employment Act of 1967, as amended, protects applicants and employees 40 years of age or older from discrimination based on age in hiring, promotion, discharge, pay, fringe benefits, job training, classification, referral, and other aspects of employment.

SEX (WAGES)

In addition to sex discrimination prohibited by Title VII of the Civil Rights Act, as amended, the Equal Pay Act of 1963, as amended, prohibits sex discrimination in the payment of wages to women and men performing substantially equal work, in jobs that require equal skill, effort, and responsibility, under similar working conditions, in the same establishment.

GENETICS

Title II of the Genetic Information Nondiscrimination Act of 2008 protects applicants and employees from discrimination based on genetic information in hiring, promotion, discharge, pay, fringe benefits, job training, classification, referral, and other aspects of employment. GINA also restricts employers' acquisition of genetic information and strictly limits disclosure of genetic information. Genetic information includes information about genetic tests of applicants, employees, or their family members; the manifestation of diseases or disorders in family members (family medical history); and requests for or receipt of genetic services by applicants, employees, or their family members.

RETALIATION

All of these Federal laws prohibit covered entities from retaliating against a person who files a charge of discrimination, participates in a discrimination proceeding, or otherwise opposes an unlawful employment practice.

WHAT TO DO IF YOU BELIEVE DISCRIMINATION HAS OCCURRED

There are strict time limits for filing charges of employment discrimination. To preserve the ability of EEOC to act on your behalf and to protect your right to file a private lawsuit, should you ultimately need to, you should contact EEOC promptly when discrimination is suspected: The U.S. Equal Employment Opportunity Commission (EEOC), 1-800-669-4000 (toll-free) or 1-800-669-6820 (toll-free TTY number for individuals with hearing impairments). EEOC field office information is available at www.eeoc.gov or in most telephone directories in the U.S. Government or Federal Government section. Additional information about EEOC, including information about charge filing, is available at www.eeoc.gov.

Employers Holding Federal Contracts or Subcontracts

Applicants to and employees of companies with a Federal government contract or subcontract are protected under Federal law from discrimination on the following bases:

RACE, COLOR, RELIGION, SEX, NATIONAL ORIGIN

Executive Order 11246, as amended, prohibits job discrimination on the basis of race, color, religion, sex or national origin, and requires affirmative action to ensure equality of opportunity in all aspects of employment.

INDIVIDUALS WITH DISABILITIES

Section 503 of the Rehabilitation Act of 1973, as amended, protects qualified individuals from discrimination on the basis of disability in hiring, promotion, discharge, pay, fringe benefits, job training, classification, referral, and other aspects of employment. Disability discrimination includes not making reasonable accommodation to the known physical or mental limitations of an otherwise qualified individual with a disability who is an applicant or employee, barring undue hardship. Section 503 also requires that Federal contractors take affirmative action to employ and advance in employment qualified individuals with disabilities at all levels of employment, including the executive level.

DISABLED, RECENTLY SEPARATED, OTHER PROTECTED, AND ARMED FORCES SERVICE MEDAL VETERANS

The Vietnam Era Veterans' Readjustment Assistance Act of 1974, as amended, 38 U.S.C. 4212, prohibits job discrimination and requires affirmative action to employ and advance in employment disabled veterans, recently separated veterans (within three years of discharge or release from active duty), other protected veterans (veterans who served during a war or in a campaign or expedition for which a campaign badge has been authorized), and Armed Forces service medal veterans (veterans who, while on active duty, participated in a U.S. military operation for which an Armed Forces service medal was awarded).

RETALIATION

Retaliation is prohibited against a person who files a complaint of discrimination, participates in an OFCCP proceeding, or otherwise opposes discrimination under these Federal laws.

Any person who believes a contractor has violated its nondiscrimination or affirmative action obligations under the authorities above should contact immediately:

The Office of Federal Contract Compliance Programs (OFCCP), U.S. Department of Labor, 200 Constitution Avenue, N.W., Washington, D.C. 20210, 1-800-397-6251 (toll-free) or (202) 693-1337 (TTY). OFCCP may also be contacted by e-mail at OFCCP-Public@dol.gov, or by calling an OFCCP regional or district office, listed in most telephone directories under U.S. Government, Department of Labor.

Programs or Activities Receiving Federal Financial Assistance

RACE, COLOR, NATIONAL ORIGIN, SEX

In addition to the protections of Title VII of the Civil Rights Act of 1964, as amended, Title VI of the Civil Rights Act of 1964, as amended, prohibits discrimination on the basis of race, color or national origin in programs or activities receiving Federal financial assistance. Employment discrimination is covered by Title VI if the primary objective of the financial assistance is provision of employment, or where employment discrimination causes or may cause discrimination in providing services under such programs. Title IX of the Education Amendments of 1972 prohibits employment discrimination on the basis of sex in educational programs or activities which receive Federal financial assistance.

INDIVIDUALS WITH DISABILITIES

Section 504 of the Rehabilitation Act of 1973, as amended, prohibits employment discrimination on the basis of disability in any program or activity which receives Federal financial assistance. Discrimination is prohibited in all aspects of employment against persons with disabilities who, with or without reasonable accommodation, can perform the essential functions of the job.

If you believe you have been discriminated against in a program of any institution which receives Federal financial assistance, you should immediately contact the Federal agency providing such assistance.

OFFICIAL NOTICE

California Minimum Wage



MW-2022

EFFECTIVE DATE	Employers with 25 or Fewer Employees*	Employers with 26 or More Employees *
January 1, 2022	\$14.00	\$15.00
January 1, 2023	\$15.00	\$15.00

PREVIOUS YEAR

January 1, 2021	\$13.00	\$14.00
-----------------	----------------	----------------

*Employees treated as employed by a single qualified taxpayer pursuant to Revenue and Taxation Code section 23626 are treated as employees of that single taxpayer. To employers and representatives of persons working in industries and occupations in the State of California:

SUMMARY OF ACTIONS

TAKE NOTICE that on April 4, 2016, the Governor of California signed legislation passed by the California Legislature, raising the minimum wage for all industries. (SB 3, Stats of 2016, amending section 1182.12. of the California Labor Code.) Pursuant to its authority under Labor Code section 1182.13, the Department of Industrial Relations amends and republishes Sections 2, 3, and 5 of the General Minimum Wage Order, MW-2019. Section 1, Applicability, and Section 4, Separability, have not been changed. Consistent with this enactment, amendments are made to the minimum wage, and the meals and lodging credits sections of all of the IWC's industry and occupation orders.

This summary must be made available to employees in accordance with the IWC's wage orders. Copies of the full text of the amended wage orders may be obtained by downloading online at <https://www.dir.ca.gov/iwc/WageOrderIndustries.htm> or by contacting your local Division of Labor Standards Enforcement office.

1. APPLICABILITY

The provisions of this Order shall not apply to outside salespersons and individuals who are the parent, spouse, or children of the employer previously contained in this Order and the IWC's industry and occupation orders. Exceptions and modifications provided by statute or in Section 1, Applicability, and in other sections of the IWC's industry and occupation orders may be used where any such provisions are enforceable and applicable to the employer.

2. MINIMUM WAGES

Every employer shall pay to each employee wages not less than those stated above, on each effective date, per hour for all hours worked.

3. MEALS AND LODGING CREDITS - TABLE

When credit for meals or lodging is used to meet part of the employer's minimum wage obligation, the amounts so credited pursuant to a voluntary written agreement may not be more than the following

EFFECTIVE:	JANUARY 1, 2020		JANUARY 1, 2021		JANUARY 1, 2022		JANUARY 1, 2023
For an employer who employs:	26 or More Employees	25 or Fewer Employees	26 or More Employees	25 or Fewer Employees	26 or More Employees	25 or Fewer Employees	All Employers regardless of number of Employees
LODGING							
Room occupied alone	\$61.13 /week	\$56.43 /week	\$65.83 /week	\$61.13 /week	\$70.53 /week	\$65.83 /week	\$70.53 /week
Room shared	\$50.46 /week	\$46.58 /week	\$54.34 /week	\$50.46 /week	\$58.22 /week	\$54.34 /week	\$58.22 /week
Apartment – two thirds (2/3) of the ordinary rental value, and in no event more than:	\$734.21 /month	\$677.75 /month	\$790.67 /month	\$734.21 /month	\$847.12 /month	\$790.67 /month	\$847.12 /month
Where a couple are both employed by the employer, two thirds (2/3) of the ordinary rental value, and in no event more than:	\$1086.07 /month	\$1002.56 /month	\$1169.59 /month	\$1086.07 /month	\$1253.10 /month	\$1169.59 /month	\$1253.10 /month
MEALS							
Breakfast	\$4.70	\$4.34	\$5.06	\$4.70	\$5.42	\$5.06	\$5.42
Lunch	\$6.47	\$5.97	\$6.97	\$6.47	\$7.47	\$6.97	\$7.47
Dinner	\$8.68	\$8.01	\$9.35	\$8.68	\$10.02	\$9.35	\$10.02

Meals or lodging may not be credited against the minimum wage without a voluntary written agreement between the employer and the employee. When credit for meals or lodging is used to meet part of the employer's minimum wage obligation, the amounts so credited may not be more than the amounts stated in the table above.

4. SEPARABILITY

If the application of any provision of this Order, or any section, subsection, subdivision, sentence, clause, phrase, word or portion of this Order should be held invalid, unconstitutional, unauthorized, or prohibited by statute, the remaining provisions thereof shall not be affected thereby, but shall continue to be given full force and effect as if the part so held invalid or unconstitutional had not been included herein.

5. AMENDED PROVISIONS

This Order amends the minimum wage and meals and lodging credits in MW-2019, as well as in the IWC's industry and occupation orders. (See Orders 1-15, Secs. 4 and 10; and Order 16, Secs. 4 and 9.) This Order makes no other changes to the IWC's industry and occupation orders.

These Amendments to the Wage Orders shall be in effect as of January 1, 2021.

Questions about enforcement should be directed to the Labor Commissioner's Office. For the address and telephone number of the office nearest you, information can be found on the internet at www.dir.ca.gov/DLSE/dlse.html or under a search for "California Labor Commissioner's Office" on the internet or any other directory. The Labor Commissioner has offices in the following cities: Bakersfield, El Centro, Fresno, Long Beach, Los Angeles, Oakland, Redding, Sacramento, Salinas, San Bernardino, San Diego, San Francisco, San Jose, Santa Ana, Santa Barbara, Santa Rosa, Stockton, and Van Nuys.

THIS POSTER MUST BE DISPLAYED WHERE EMPLOYEES CAN EASILY READ IT

(Poster may be printed on 8 ½" x 11" letter size paper)

**HEALTHY WORKPLACES/HEALTHY FAMILIES ACT OF 2014
PAID SICK LEAVE****Entitlement:**

- An employee who, on or after July 1, 2015, works in California for 30 or more days within a year from the beginning of employment is entitled to paid sick leave.
- Paid sick leave accrues at the rate of one hour per every 30 hours worked, paid at the employee's regular wage rate. Accrual shall begin on the first day of employment or July 1, 2015, whichever is later.
- Accrued paid sick leave shall carry over to the following year of employment and may be capped at 48 hours or 6 days. However, subject to specified conditions, if an employer has a paid sick leave, paid leave or paid time off policy (PTO) that provides no less than 24 hours or three days of paid leave or paid time off, no accrual or carry over is required if the full amount of leave is received at the beginning of each year in accordance with the policy.

Usage:

- An employee may use accrued paid sick days beginning on the 90th day of employment.
- An employer shall provide paid sick days upon the oral or written request of an employee for themselves or a family member for the diagnosis, care or treatment of an existing health condition or preventive care, or specified purposes for an employee who is a victim of domestic violence, sexual assault, or stalking.
- An employer may limit the use of paid sick days to 24 hours or three days in each year of employment.

Retaliation or discrimination against an employee who requests paid sick days or uses paid sick days or both is prohibited. An employee can file a complaint with the Labor Commissioner against an employer who retaliates or discriminates against the employee.

For additional information you may contact your employer or the local office of the Labor Commissioner. Locate the office by looking at the list of offices on our website <http://www.dir.ca.gov/dlse/DistrictOffices.htm> using the [alphabetical listing of cities, locations, and communities](#). Staff is available in person and by telephone.

State of California
Department of Industrial Relations
Division of Labor Standards Enforcement

PAYDAY NOTICE

REGULAR PAYDAYS FOR EMPLOYEES OF The County of Orange
(FIRM NAME)

_____ SHALL BE AS FOLLOWS:
Every Other Friday

THIS IS IN ACCORDANCE WITH SECTIONS 204, 204A, 204B, 205, AND 205.5
OF THE CALIFORNIA LABOR CODE

BY The County of Orange

TITLE _____

DLSE 8 (REV. 06-02)

PLEASE POST

EMPLOYEE RIGHTS

EMPLOYEE POLYGRAPH PROTECTION ACT

The Employee Polygraph Protection Act prohibits most private employers from using lie detector tests either for pre-employment screening or during the course of employment.

PROHIBITIONS	Employers are generally prohibited from requiring or requesting any employee or job applicant to take a lie detector test, and from discharging, disciplining, or discriminating against an employee or prospective employee for refusing to take a test or for exercising other rights under the Act.
EXEMPTIONS	<p>Federal, State and local governments are not affected by the law. Also, the law does not apply to tests given by the Federal Government to certain private individuals engaged in national security-related activities.</p> <p>The Act permits polygraph (a kind of lie detector) tests to be administered in the private sector, subject to restrictions, to certain prospective employees of security service firms (armored car, alarm, and guard), and of pharmaceutical manufacturers, distributors and dispensers.</p> <p>The Act also permits polygraph testing, subject to restrictions, of certain employees of private firms who are reasonably suspected of involvement in a workplace incident (theft, embezzlement, etc.) that resulted in economic loss to the employer.</p> <p>The law does not preempt any provision of any State or local law or any collective bargaining agreement which is more restrictive with respect to lie detector tests.</p>
EXAMINEE RIGHTS	Where polygraph tests are permitted, they are subject to numerous strict standards concerning the conduct and length of the test. Examinees have a number of specific rights, including the right to a written notice before testing, the right to refuse or discontinue a test, and the right not to have test results disclosed to unauthorized persons.
ENFORCEMENT	The Secretary of Labor may bring court actions to restrain violations and assess civil penalties against violators. Employees or job applicants may also bring their own court actions.

THE LAW REQUIRES EMPLOYERS TO DISPLAY THIS POSTER WHERE EMPLOYEES AND JOB APPLICANTS CAN READILY SEE IT.



WAGE AND HOUR DIVISION
UNITED STATES DEPARTMENT OF LABOR

1-866-487-9243
TTY: 1-877-889-5627
www.dol.gov/whd



EMERGENCY

AMBULANCE: 911

FIRE — RESCUE: 911

HOSPITAL: 911

PHYSICIAN: 911

ALTERNATE: 911

POLICE: 911

CAL/OSHA: (714) 588-4451

Posting is required by Title 8 Section 1512 (e), California Code of Regulations



March 1990
S-500

State of California
Department of Industrial Relations
Cal/OSHA Publications
P.O. Box 420603
San Francisco, CA 94142-0603

Safety and Health Protection on the Job

State of California
Department of Industrial Relations



California law provides workplace safety and health protections for workers through regulations enforced by the Division of Occupational Safety and Health (Cal/OSHA). This poster explains some basic requirements and procedures to comply with the state's workplace safety and health standards and orders. The law requires that this poster be displayed. Failure to do so could result in a substantial penalty. Cal/OSHA standards can be found at www.dir.ca.gov/samples/search/query.htm.

WHAT AN EMPLOYER MUST DO:

All employers must provide work and workplaces that are safe and healthful. In other words, as an employer, you must follow state laws governing job safety and health. Failure to do so can result in a threat to the life or health of workers, and substantial monetary penalties.

You must display this poster in a conspicuous place where notices to employees are customarily posted so everyone on the job can be aware of basic rights and responsibilities.

You must have a written and effective Injury and Illness Prevention Program (IIPP) meeting the requirements of California Code of Regulations, title 8, section 3203 (www.dir.ca.gov/title8/3203.html) and provide access to employees and their designated representatives.

You must be aware of hazards your employees face on the job and keep records showing that each employee has been trained in the hazards unique to each job assignment.

You must correct any hazardous condition that you know may result in injury to employees. Failure to do so could result in criminal charges, monetary penalties, and even incarceration.

You must notify a local Cal/OSHA district office of any serious injury or illness, or death, occurring on the job. Be sure to do this immediately after calling for emergency help to assist the injured employee. Failure to report a serious injury or illness, or death, within 8 hours can result in a minimum civil penalty of \$5,000.

WHAT AN EMPLOYER MUST NEVER DO:

Never permit an employee to do work that violates Cal/OSHA workplace safety and health regulations.

Never permit an employee to be exposed to harmful substances without providing adequate protection.

Never allow an untrained employee to perform hazardous work.

EMPLOYEES HAVE CERTAIN WORKPLACE SAFETY & HEALTH RIGHTS:

As an employee, you (or someone acting for you) have the right to file a confidential complaint and request an inspection of your workplace if you believe conditions there are unsafe or unhealthful. This is done by contacting the local Cal/OSHA district office (see below). Your name is not revealed by Cal/OSHA, unless you request otherwise.

You also have the right to bring unsafe or unhealthful conditions to the attention of the Cal/OSHA investigator inspecting your workplace.

You and your designated representative have the right to access the employer's IIPP. Any employee has the right to refuse to perform work that would violate an occupational safety or health standard or order where such violation would create a real and apparent hazard to the employee or other employees.

You may not be fired or punished in any way for filing a complaint about unsafe or unhealthful working conditions, or for otherwise exercising your rights to a safe and healthful workplace. If you feel that you have been fired or punished for exercising your rights, you may file a complaint about this type of discrimination by contacting the nearest office of the California Department of Industrial Relations, Division of Labor Standards Enforcement (Labor Commissioner's Office) or the San Francisco office of the U.S. Department of Labor, Occupational Safety and Health Administration. (Employees of state or local government agencies may only file these complaints with the California Labor Commissioner's Office.) Consult your local telephone directory for the office nearest you.

EMPLOYEES ALSO HAVE RESPONSIBILITIES:

To keep the workplace and your coworkers safe, you should tell your employer about any hazard that could result in an injury or illness to an employee. While working, you must always obey state workplace safety and health laws.

HELP IS AVAILABLE:

To learn more about workplace safety rules, you may contact Cal/OSHA Consultation Services for free information, required forms, and publications. You can also contact a local district office of Cal/OSHA. If you prefer, you may retain a competent private consultant, or ask your workers' compensation insurance carrier for guidance in obtaining information.

Call the FREE Worker Information Helpline – (866) 924-9757		
DIVISION OF OCCUPATIONAL SAFETY AND HEALTH (CAL/OSHA)		
HEADQUARTERS: 1515 Clay Street, Ste. 1901, Oakland, CA 94612 – Telephone (510) 286-7000		
District Offices		Cal OSHA Consultation Services
Field / Area Offices		
American Canyon	3419 Broadway St., Ste. H8, American Canyon 94503	(707) 649-3700
Bakersfield	7718 Meany Ave., Bakersfield 93308	(661) 588-6400
Foster City	1065 East Hillsdale Bl., Ste. 110, Foster City 94404	(650) 573-3812
Fremont	39141 Civic Center Dr., Ste. 310, Fremont 94538	(510) 794-2521
Fresno	2550 Mariposa St., Rm. 4000, Fresno 93721	(559) 445-5302
Long Beach	1500 Hughes Way, Suite C-201, Long Beach 90810	(424) 450-2630
Los Angeles	320 West Fourth St., Rm. 820, Los Angeles 90013	(213) 576-7451
Modesto	4206 Technology Dr., Ste. 3, Modesto 95356	(209) 545-7310
Monrovia	800 Royal Oaks Dr., Ste. 105, Monrovia 91016	(626) 239-0369
Oakland	1515 Clay St., Ste. 1303, Box 41, Oakland 94612	(510) 622-2916
Redding	381 Hemsted Dr., Redding 96002	(530) 224-4743
Sacramento	1750 Howe Ave., Ste. 430, Sacramento 95825	(916) 263-2800
San Bernardino	464 West Fourth St., Ste. 332, San Bernardino 92401	(909) 383-4321
San Diego	7575 Metropolitan Dr., Ste. 207, San Diego 92108	(619) 767-2280
San Francisco	455 Golden Gate Ave., Rm. 9516, San Francisco 94102	(415) 557-0100
Santa Ana	2 MacArthur Place, Ste. 720, Santa Ana 92707	(714) 558-4451
Van Nuys	6150 Van Nuys Blvd., Ste. 405, Van Nuys 91401	(818) 901-5403
Consultation Region Office		
•Fresno	2550 Mariposa Mall, Rm. 3014	(559) 445-6800
Fresno 93721		

Enforcement of Cal/OSHA workplace safety and health standards is carried out by the Division of Occupational Safety and Health, under the California Department of Industrial Relations, which has primary responsibility for administering the Cal/OSHA program. Safety and health standards are promulgated by the Occupational Safety and Health Standards Board. Anyone desiring to register a complaint alleging inadequacy in the administration of the California Occupational Safety and Health Plan may do so by contacting the San Francisco Regional Office of the Occupational Safety and Health Administration (OSHA), U.S. Department of Labor Tel: (415) 625-2547. OSHA monitors the operation of state plans to assure that continued approval is merited.

A large, stylized ballot box on the left side of the page. The top of the box is blue with three white stars. The front of the box features vertical red and white stripes. A white ballot is shown emerging from the top.

TIME OFF TO VOTE

**POLLS ARE OPEN FROM 7:00 A.M.
TO 8:00 P.M. EACH ELECTION DAY**

If you are scheduled to be at work during that time and you do not have sufficient time outside of working hours to vote at a statewide election, California law allows you to take up to two hours off to vote, without losing any pay.

You may take as much time as you need to vote, but only two hours of that time will be paid.

Your time off for voting can be only at the beginning or end of your regular work shift, whichever allows the most free time for voting and the least time off from your regular working shift, unless you make another arrangement with your employer.

If three working days before the election you think you will need time off to vote, you must notify your employer at least two working days prior to the election.



NOTICE TO EMPLOYERS REGARDING EMPLOYEE TIME OFF FOR VOTING

State law (California Elections Code section 14001) requires employers to post a notice to their employees advising them of provisions for taking paid leave for the purpose of voting in statewide elections.

A sample of this notice has been printed on the opposite side of this page for your convenience.

This notice must be posted conspicuously at the place of work, if practicable, or elsewhere where it can be seen as employees come and go to their place of work, not less than 10 days before every statewide election.

If you have any questions about this notice or other election related information, please contact the Secretary of State's Voter Hotline at (800) 345-VOTE (8683).

Employees are eligible for paid time off for the purpose of voting only if they do not have sufficient time outside of working hours to vote. The intent of the law is to provide an opportunity to vote for workers who would not be able to do so because of their jobs.

Polls are open from
7:00 a.m. to 8:00 p.m.
each Election Day.

Employees can be given as much time as they need in order to vote, but only a maximum of two hours is paid.

Employers may require employees to give advance notice that they will need additional time off for voting.

Employers may require time off to be taken only at the beginning or end of the employee's shift.



YOUR RIGHTS UNDER USERRA

THE UNIFORMED SERVICES EMPLOYMENT AND REEMPLOYMENT RIGHTS ACT

USERRA protects the job rights of individuals who voluntarily or involuntarily leave employment positions to undertake military service or certain types of service in the National Disaster Medical System. USERRA also prohibits employers from discriminating against past and present members of the uniformed services, and applicants to the uniformed services.

REEMPLOYMENT RIGHTS

You have the right to be reemployed in your civilian job if you leave that job to perform service in the uniformed service and:

- ☆ you ensure that your employer receives advance written or verbal notice of your service;
- ☆ you have five years or less of cumulative service in the uniformed services while with that particular employer;
- ☆ you return to work or apply for reemployment in a timely manner after conclusion of service; and
- ☆ you have not been separated from service with a disqualifying discharge or under other than honorable conditions.

If you are eligible to be reemployed, you must be restored to the job and benefits you would have attained if you had not been absent due to military service or, in some cases, a comparable job.

RIGHT TO BE FREE FROM DISCRIMINATION AND RETALIATION

If you:

- ☆ are a past or present member of the uniformed service;
- ☆ have applied for membership in the uniformed service; or
- ☆ are obligated to serve in the uniformed service;

then an employer may not deny you:

- ☆ initial employment;
- ☆ reemployment;
- ☆ retention in employment;
- ☆ promotion; or
- ☆ any benefit of employment

because of this status.

In addition, an employer may not retaliate against anyone assisting in the enforcement of USERRA rights, including testifying or making a statement in connection with a proceeding under USERRA, even if that person has no service connection.

HEALTH INSURANCE PROTECTION

- ☆ If you leave your job to perform military service, you have the right to elect to continue your existing employer-based health plan coverage for you and your dependents for up to 24 months while in the military.
- ☆ Even if you don't elect to continue coverage during your military service, you have the right to be reinstated in your employer's health plan when you are reemployed, generally without any waiting periods or exclusions (e.g., pre-existing condition exclusions) except for service-connected illnesses or injuries.

ENFORCEMENT

- ☆ The U.S. Department of Labor, Veterans Employment and Training Service (VETS) is authorized to investigate and resolve complaints of USERRA violations.
- ☆ For assistance in filing a complaint, or for any other information on USERRA, contact VETS at **1-866-4-USA-DOL** or visit its website at **<http://www.dol.gov/vets>**. An interactive online USERRA Advisor can be viewed at **<http://www.dol.gov/elaws/userra.htm>**.
- ☆ If you file a complaint with VETS and VETS is unable to resolve it, you may request that your case be referred to the Department of Justice or the Office of Special Counsel, as applicable, for representation.
- ☆ You may also bypass the VETS process and bring a civil action against an employer for violations of USERRA.

The rights listed here may vary depending on the circumstances. The text of this notice was prepared by VETS, and may be viewed on the internet at this address: **<http://www.dol.gov/vets/programs/userra/poster.htm>**. Federal law requires employers to notify employees of their rights under USERRA, and employers may meet this requirement by displaying the text of this notice where they customarily place notices for employees.



U.S. Department of Labor
1-866-487-2365



U.S. Department of Justice



Office of Special Counsel



1-800-336-4590

Publication Date — April 2017

The Division of Labor Standards Enforcement believes that the sample posting below meets the requirements of Labor Code Section 1102.8(a). This document must be printed to 8.5 x 14 inch paper with margins no larger than one-half inch in order to conform to the statutory requirement that the lettering be larger than size 14 point type.

WHISTLEBLOWERS ARE PROTECTED

It is the public policy of the State of California to encourage employees to notify an appropriate government or law enforcement agency, person with authority over the employee, or another employee with authority to investigate, discover, or correct the violation or noncompliance, and to provide information to and testify before a public body conducting an investigation, hearing or inquiry, when they have reason to believe their employer is violating a state or federal statute, or violating or not complying with a local, state or federal rule or regulation.

Who is protected?

Pursuant to [California Labor Code Section 1102.5](#), employees are the protected class of individuals. "Employee" means any person employed by an employer, private or public, including, but not limited to, individuals employed by the state or any subdivision thereof, any county, city, city and county, including any charter city or county, and any school district, community college district, municipal or public corporation, political subdivision, or the University of California. [\[California Labor Code Section 1106\]](#)

What is a whistleblower?

A "whistleblower" is an employee who discloses information to a government or law enforcement agency, person with authority over the employee, or to another employee with authority to investigate, discover, or correct the violation or noncompliance, or who provides information to or testifies before a public body conducting an investigation, hearing or inquiry, where the employee has reasonable cause to believe that the information discloses:

1. A violation of a state or federal statute,
2. A violation or noncompliance with a local, state or federal rule or regulation, or
3. With reference to employee safety or health, unsafe working conditions or work practices in the employee's employment or place of employment.

A whistleblower can also be an employee who refuses to participate in an activity that would result in a violation of a state or federal statute, or a violation of or noncompliance with a local, state or federal rule or regulation.

What protections are afforded to whistleblowers?

1. An employer may not make, adopt, or enforce any rule, regulation, or policy preventing an employee from being a whistleblower.
2. An employer may not retaliate against an employee who is a whistleblower.
3. An employer may not retaliate against an employee for refusing to participate in an activity that would result in a violation of a state or federal statute, or a violation or noncompliance with a state or federal rule or regulation.
4. An employer may not retaliate against an employee for having exercised his or her rights as a whistleblower in any former employment.

Under [California Labor Code Section 1102.5](#), if an employer retaliates against a whistleblower, the employer may be required to reinstate the employee's employment and work benefits, pay lost wages, and take other steps necessary to comply with the law.

How to report improper acts

If you have information regarding possible violations of state or federal statutes, rules, or regulations, or violations of fiduciary responsibility by a corporation or limited liability company to its shareholders, investors, or employees, **call the California State Attorney General's Whistleblower Hotline at 1-800-952-5225**. The Attorney General will refer your call to the appropriate government authority for review and possible investigation.