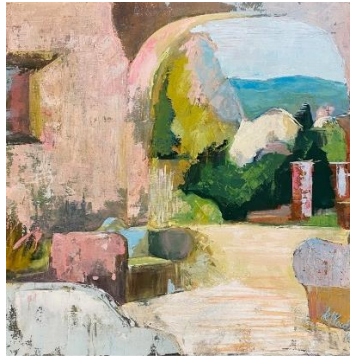


Fantasy and Fault Lines

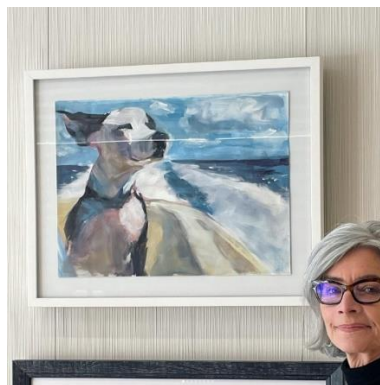
(SANTA ANA, CA) – Now on display through May 17, 2023, is a selection of new artworks by San Juan Capistrano artist Kimberleigh Wood. Taking a flight out of John Wayne Airport? Be sure to check the tabletop display cases at each security line to glimpse a serene landscape captured in acrylics and oils.



Mission Garden Bench SJC, 2023

Southern California is a land of fantasy and fault lines. The neighborhoods here are shaped and reshaped every twenty years. They are torn down and rebuilt with the regularity of a Hollywood sound stage. In a bustling metropolis, it's not hard to be detached, unsentimental. This constant change fuels Wood's desire to freeze a moment in time and apply it to canvas.

Kimberleigh Wood is a West Coast native who started painting at the age of 62. Self-taught, she paints three to eight hours a day, documenting the California landscape and the culture surrounding her.



Artist Kimberleigh Wood at her exhibition at City of Hope

"In 2019, I made the move to San Juan Capistrano. Inspiration now blooms through a place with deep and tangled roots. It calls on my consciousness to fill in the blanks and embellish the story. With paint, scribbles, and scratches I transcribe the landscapes of South Orange County into bright, deconstructed shapes, over-layed with textured and muted tones. My paintings are a snapshot made permanent for the viewer to step into and wander through," says Kimberleigh Wood of her art.

To learn more about Kimberleigh and her work, visit www.kimberleighwood.com or follow her on Instagram @hausofwood.



Terra Cotta Pots, 2022, Installed in Baggage Area B

The entire collection of work is viewable pre-security. Paintings span from the upper Departure Level near security in Terminals A, B, and C and on the lower Arrivals Level by Baggage Carousels 2 and 4.

For more information about the John Wayne Airport Arts Program, visit www.ocair.com/terminal/artexhibits.

###